

Page Builder User Guide

Index



- 1.** What is the All You Can Cloud Page Builder
- 2.** Interface
 - 2.1** Toolbar
 - 2.2** Left panel – Components
- 3.** Project creation
 - 3.1** Create a new project
 - 3.2** Page management
 - 3.3** Template application
- 4.** Global settings
- 5.** Collaboration and teamwork
 - 5.1** Multi-user access
 - 5.2** Real time collaboration
 - 5.3** Version control and history
- 6.** Preview and save
 - 6.1** Real time preview
 - 6.2** Preview mode
 - 6.3** HTML Editor
 - 6.4** Saving projects
- 7.** Export and publishing
- 8.** Conclusion and resources

1. What is the All You Can Cloud Page Builder?

The All You Can Cloud Page Builder is a visual and intuitive tool that allows you to create web pages and interactive forms in just a few minutes. It's a no-code solution that also supports code integration for managing more complex processes or custom logic. Designed for businesses that want to build and manage their own digital content, it's also a flexible and powerful platform for web agencies and development teams, enabling them to create custom web solutions quickly and securely.

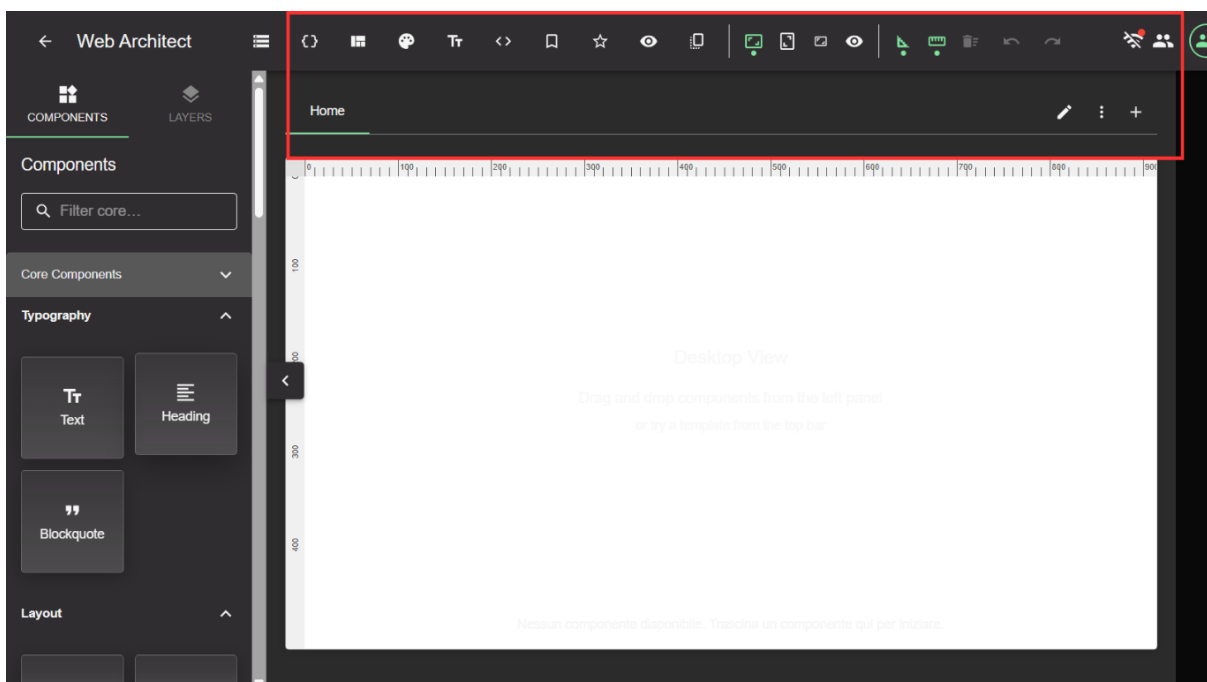
2. Interface

The Page Builder interface is designed to offer a simple, visual, and immediate experience. All the tools needed to build a web page or form are clearly organized, allowing you to work in drag & drop mode without writing code. In addition to free composition, the builder provides preconfigured templates and a global text style system to maintain visual consistency across the entire project.

2.1 Toolbar

At the top of the screen, you'll find the main commands for project management and visual structure:

- Page Management: create, rename, or duplicate pages (e.g. "Home," "Contact," "Services").
- Templates: apply or save predefined layout models and sections to speed up page creation while keeping a consistent style.
- Global Styles Management: set project-wide colors, typography, and text styles (titles, paragraphs, links).
- View Tools: rulers, grids, responsive modes, and real-time preview for desktop, tablet, and mobile testing.

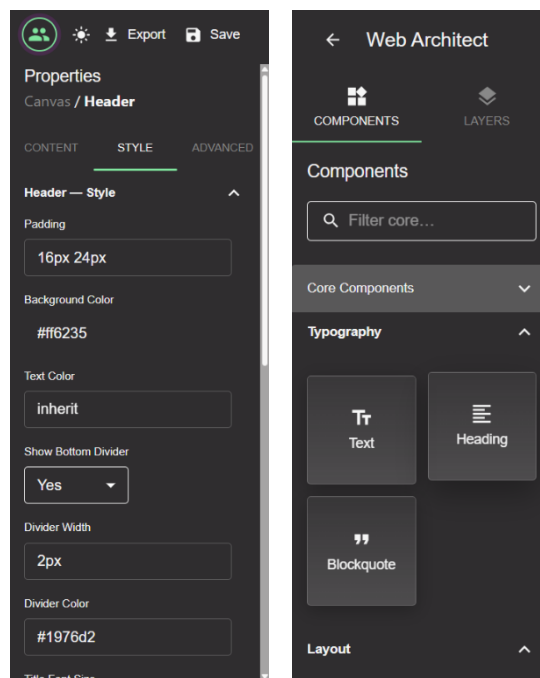


2.2 Left Panel – Components

From the Components Panel, you can select, drag, and combine the building blocks of your page. Text, images, layouts, forms, and much more — all in drag & drop mode, with no coding required. The panel is divided into several sections:

- **Typography:** text elements such as Text, Heading, and Blockquote. These support global text styles for consistent typography across the project.
- **Layout:** structural elements like Container, Grid, Divider, and Spacer, useful for building responsive page structures.
- **Media and Content:** elements like Image, Video, and Slider to add visuals and interactivity.
- **Navigation:** Breadcrumbs and Social Icons.
- **Data:** elements such as Charts.

Misc: Shortcodes and Animated Counters. Each component is fully customizable in the Properties Panel.

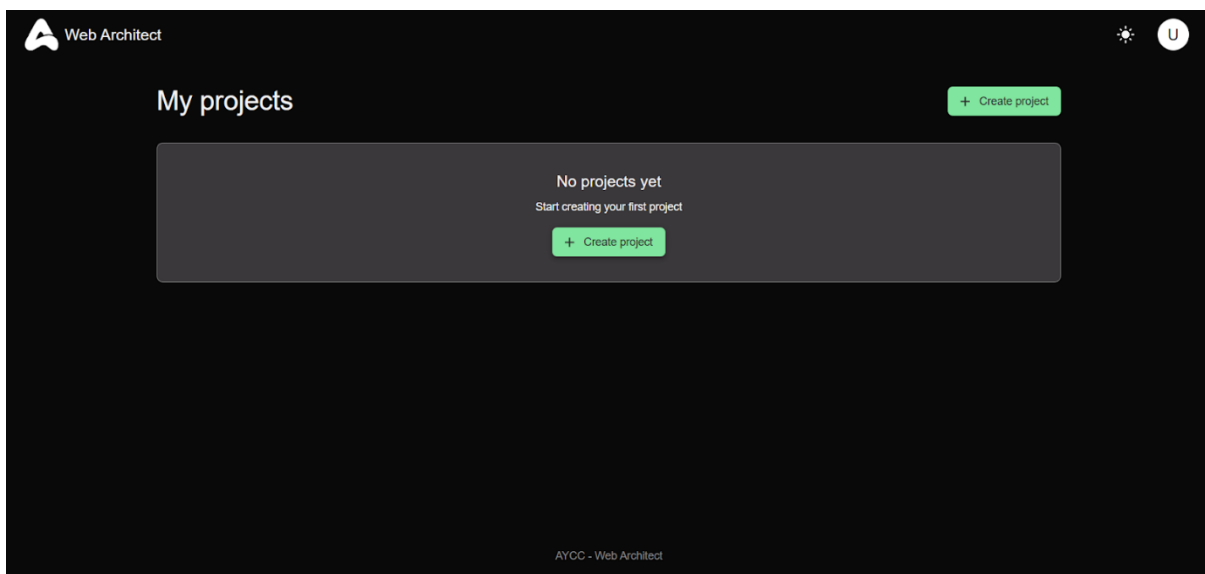


3. Project creation

The All You Can Cloud Page Builder lets you create and manage multiple projects, each containing one or more web pages. A project can represent a complete website, a private area, or an internal web app. Project management takes place directly from the Dashboard, accessible after logging in. From here, you can create, open, or duplicate projects to reuse existing layouts and settings.

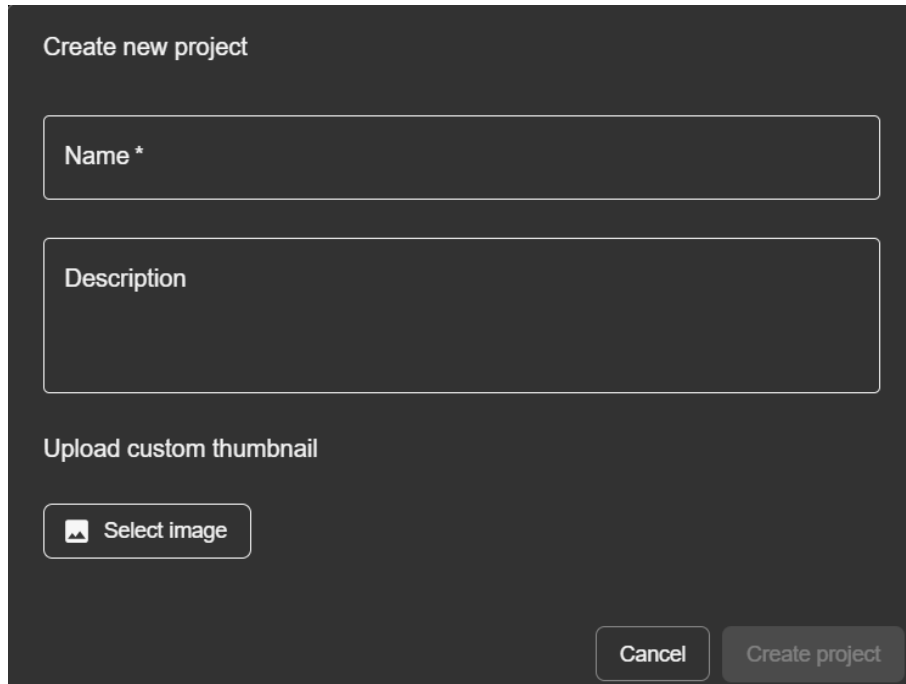
3.1 Create a new project

To start a new project: Click the “New Project” button on the dashboard or toolbar.



Enter the main details:

- Project Name: the identifier shown in the dashboard and toolbar.
- Description: a short note about the project’s purpose (e.g. “Promotional Landing Page,” “Client Portal”).
- Logo and Branding: upload a custom logo and set main colors to instantly match your brand style.
- Click “Create Project” to access the builder canvas.

A dark-themed modal form titled "Create new project". It contains three main sections: a "Name *" text input field, a "Description" text area, and an "Upload custom thumbnail" section with a "Select image" button featuring a small image icon. At the bottom right, there are two buttons: "Cancel" and "Create project".

Create new project

Name *

Description

Upload custom thumbnail

Select image

Cancel Create project

3.2 Page Management

Each project can contain one or more pages (e.g. Home, About Us, Services, Contact). From the top toolbar you can:

- Create a new page with the “+” button.
- Rename or duplicate an existing page.
- Reorder pages to define navigation.
- Delete pages no longer needed.

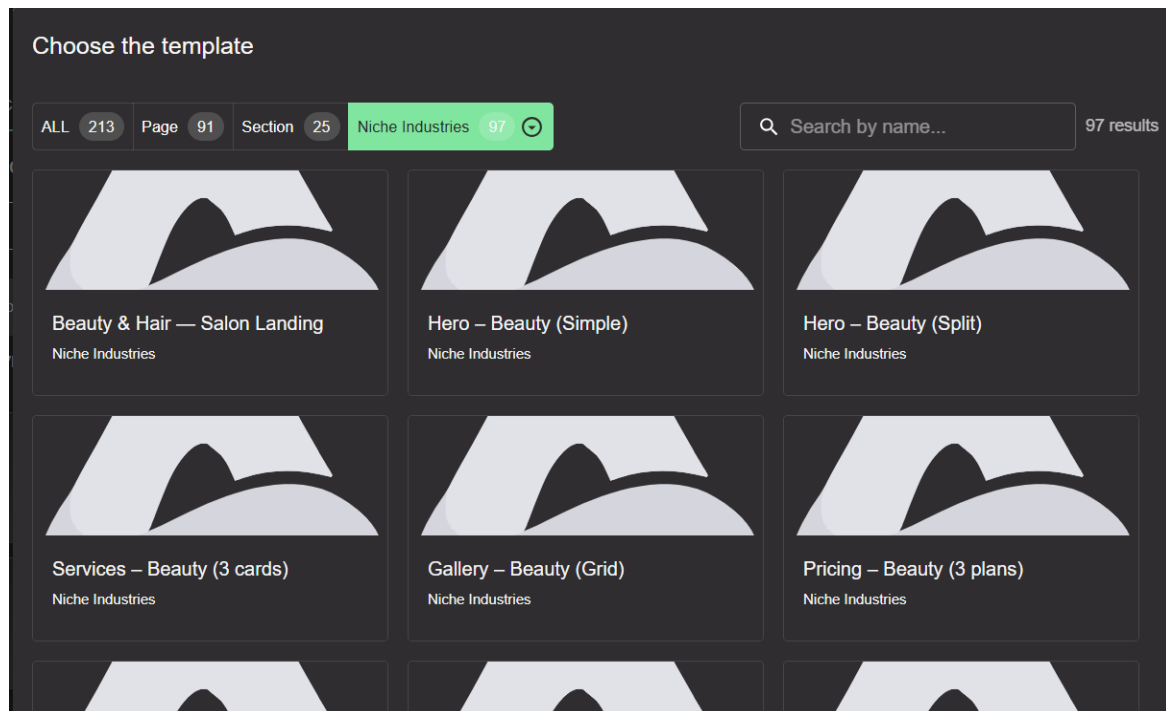
All changes are saved automatically and visible in real time in the navigation panel.

3.3 Template Application

When creating or editing a project, you can start from a preconfigured template. Templates include ready-to-use layouts for:

- Promotional landing pages
- Business or management dashboards
- Contact or signup forms
- Informational and portfolio sections

You can freely modify templates — replace images, change colors, or add new blocks to match your brand.



4. Global settings

Each project includes a Global Settings section, accessible from the toolbar or main menu. Here you can configure:

- Global color palette (primary, secondary, accents, backgrounds)
- Global typography (font, size, weight, alignment)
- Responsive breakpoints (desktop, tablet, mobile)
- Basic SEO settings (title, description, and metadata)

All changes apply automatically across the project, ensuring visual and stylistic consistency.

5. Collaboration and Teamwork

The Page Builder is designed for collaborative work, allowing multiple users to operate on the same project securely and in real time — ideal for teams, agencies, or departments managing shared content.

5.1 Multi-user Access

Each project can be shared with team members via the Collaboration Panel (user icon in the top bar). From here, you can: Invite collaborators via email or username. Assign roles and permissions (Admin, Editor, Viewer). Monitor connected users in real time.

5.2 Real-time Collaboration

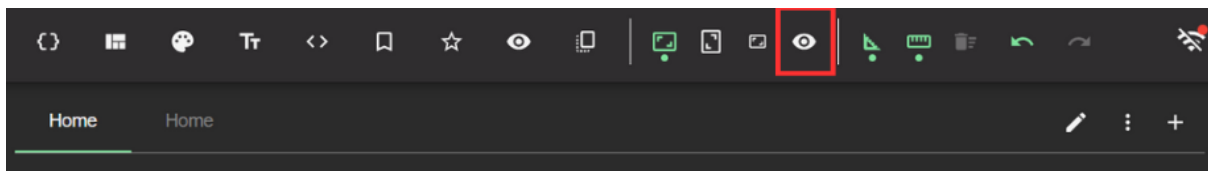
AYCC supports co-editing, allowing multiple people to edit sections simultaneously, view others' changes live, and get visual alerts in case of conflicts or page updates. This mode keeps the workflow smooth and synchronized for all team members.

5.3 Version Control and History

Every change made by a collaborator is automatically saved in the project History, allowing you to review previous versions, restore configurations, or identify who made each edit.

6. Preview and Save

The Page Builder includes live preview and auto-save features for a smooth and secure workflow. You can view and save all updates in real time, avoiding accidental loss of content or layout.



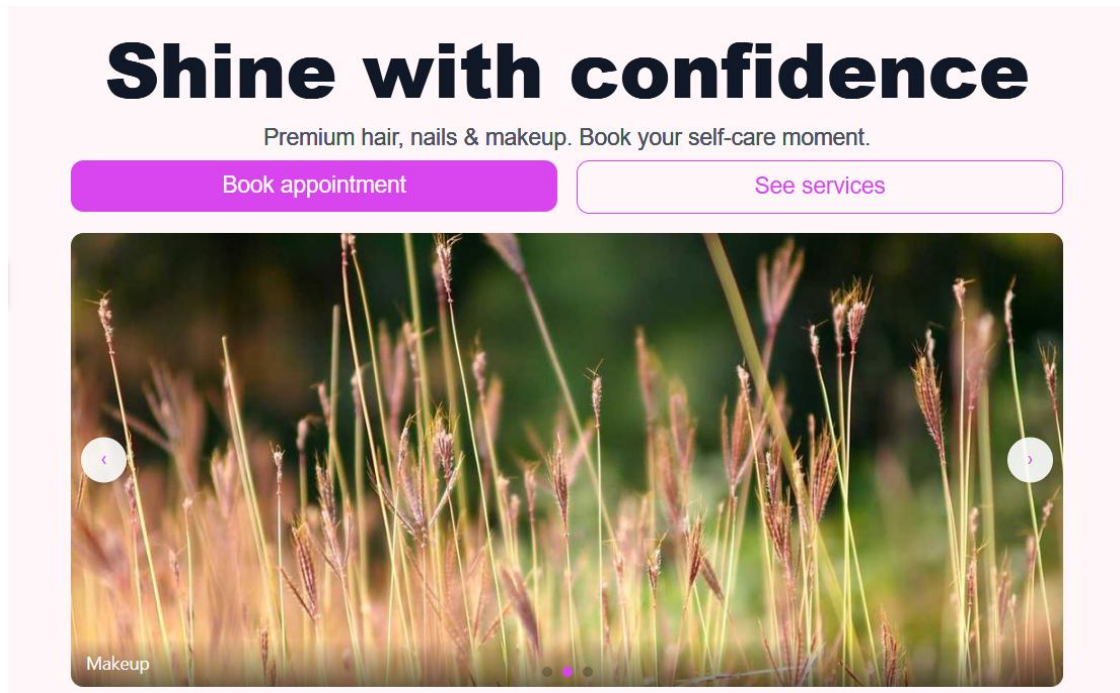
6.1 Live Preview

During editing, you can instantly see every change on the canvas — color updates, layout shifts, or style edits — across desktop, tablet, and mobile views.

6.2 Preview Mode

Click the Preview button to enter full-screen mode, hiding all editing panels. This allows you to:

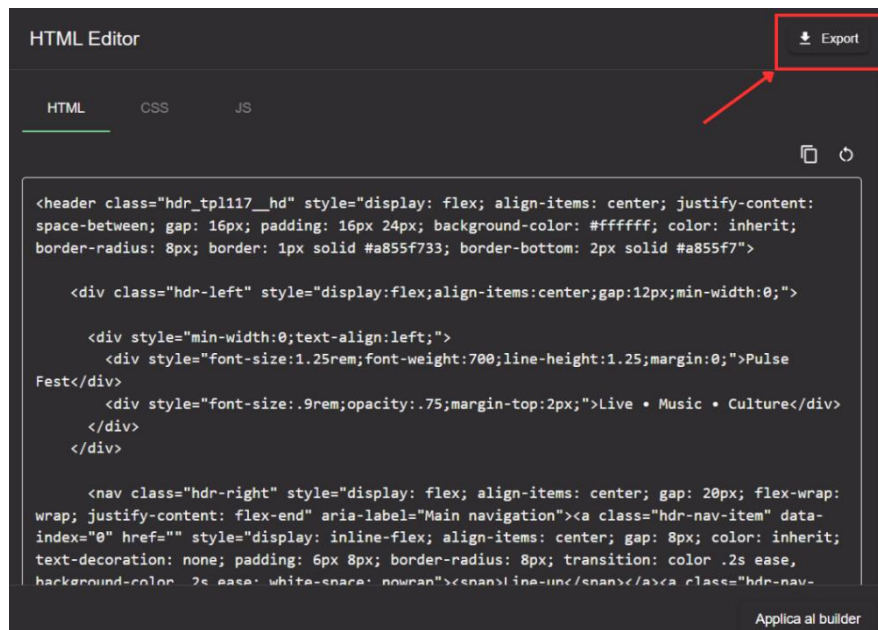
- Test links, buttons, and animations
- Navigate across multiple pages
- Show a live preview to your client or team



You can exit Preview mode with a click or by pressing ESC.

6.3 HTML Editor

The HTML Editor lets you insert custom HTML blocks and apply dedicated styles for complex elements, while keeping full consistency with your project's theme and layout. A live preview lets you see changes immediately. You can also export the code, generating clean HTML/CSS/JS output ready to use on any platform or repository.



6.4 Project Saving

There are two saving modes:

- Automatic Save: the system periodically saves your progress in the background.
- Manual Save: click the Floppy Disk icon on the toolbar to save instantly (useful before publishing or closing the project).

All saves are stored in the Version History, where you can restore or duplicate previous versions.

7. Export and Publishing

Once your design is complete, the project can be exported as HTML/CSS/JS, generating a downloadable package with optimized code and resources ready for deployment on external servers.

8. Conclusion and Resources

The All You Can Cloud Page Builder is more than a visual editor — it's a complete environment for designing, customizing, and managing web pages and business interfaces. By combining intuitive drag & drop tools, ready-to-use templates, real-time collaboration, and full design control, AYCC makes it easy to build custom digital experiences without technical barriers — while keeping high standards of quality, flexibility, and security.

